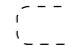





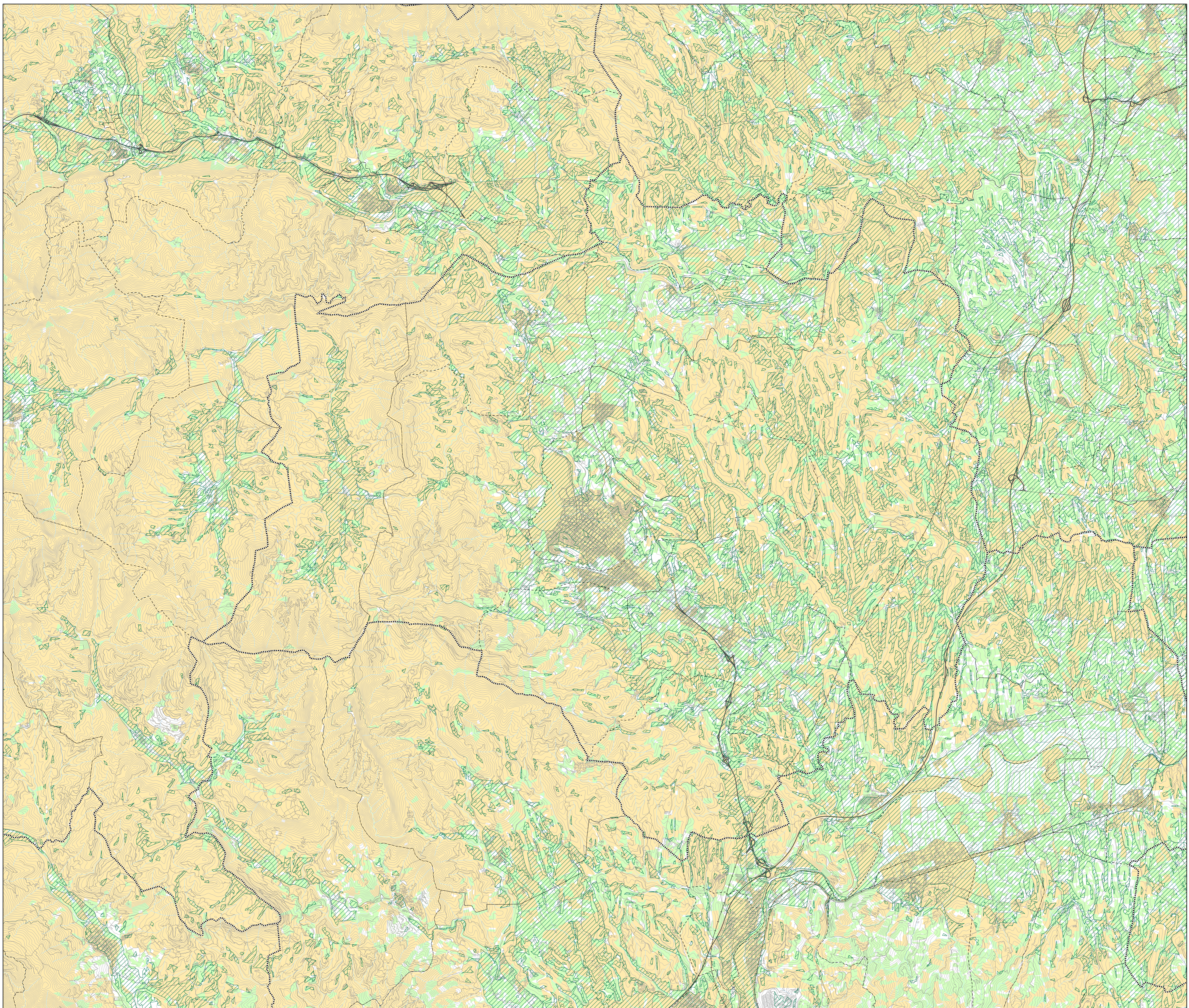

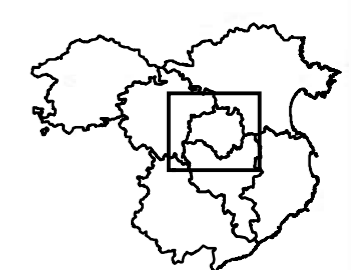


-  Límit municipal
  -  Límit comarcal
  -  Zones amb pendent inferior al 10%
- Unitats mínimes de conreu (SIGPAC 07)**
-  < 1ha
  -  1 - 4,5 ha
  -  > 4,5 ha



<b>Pla territorial de les Comarques Gironines</b>	<b>Informe de Sostenibilitat Ambiental</b>	<b>Programa de Planejament Territorial</b>
		
<small>Generalitat de Catalunya Departament de Política Territorial i Obres Públiques Secretaria per a la Planificació Territorial Programa de Planejament Territorial</small>		<small>Plànol ISA - UM.7 Unitats mínimes de conreu i pendents inferiors al 10% <b>Pla de l'Estany</b></small>
<small>0 1 2 Km</small>		<small>Escaia 1:50.000</small> 