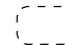





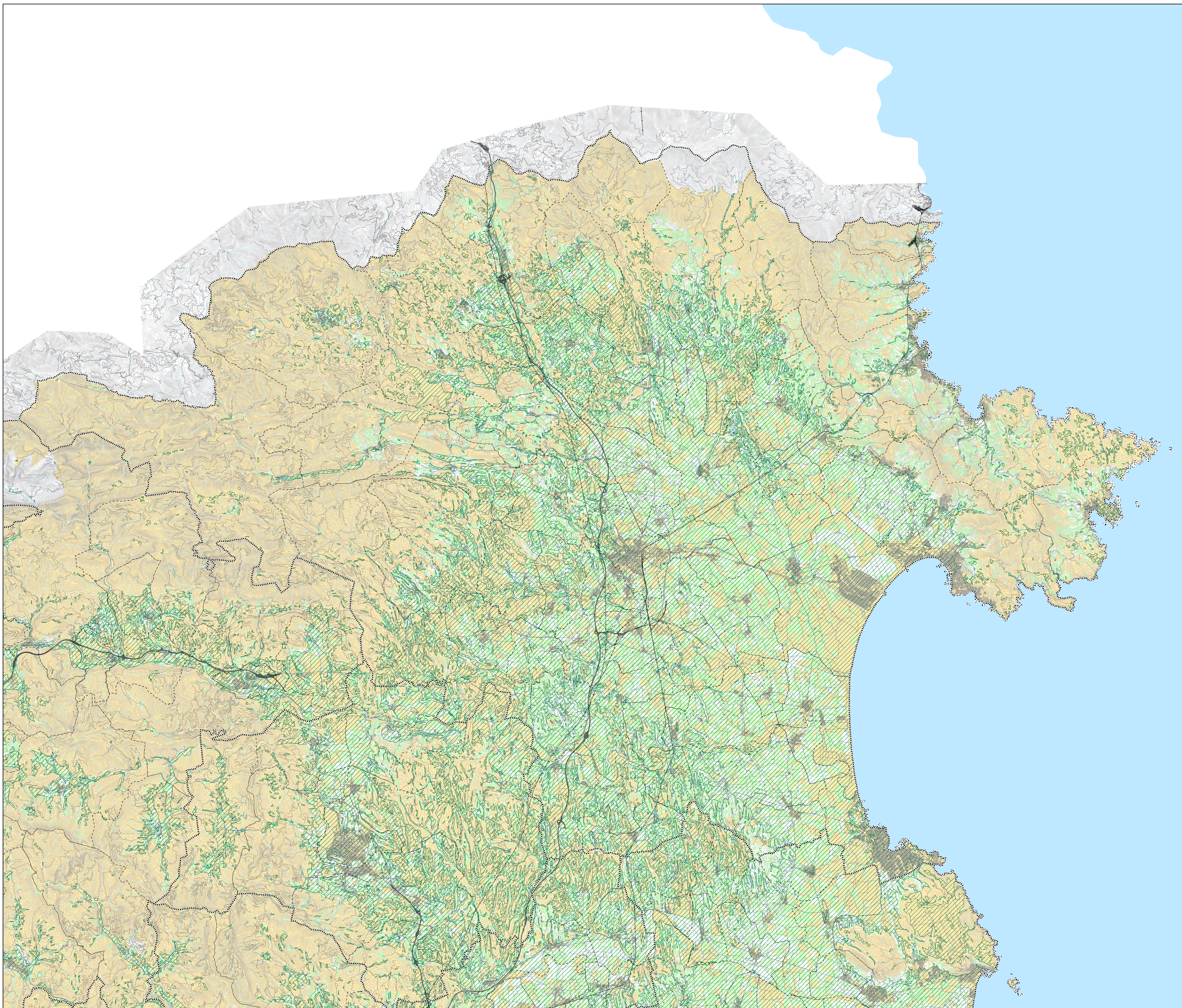


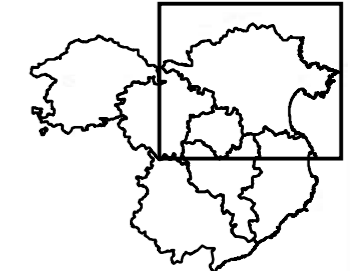
-  Límit municipal
 -  Límit comarcal
 -  Zones amb pendent inferior al 10%
- Unitats mínimes de conreu (SIGPAC 07)**
-  < 1ha
 -  1 - 4,5 ha
 -  > 4,5 ha



Pla territorial de les Comarques Gironines

Informe de Sostenibilitat Ambiental

Programa de Planejament Territorial



Plànol ISA - UM.1

Unitats mínimes de conreu i pendents inferiors al 10%

Alt Empordà



Generalitat de Catalunya
 Departament de Política Territorial
 i Obres Públiques
 Secretaria per a la Planificació Territorial
 Programa de Planejament Territorial

Escala 1:100.000

0 1 2 Km

